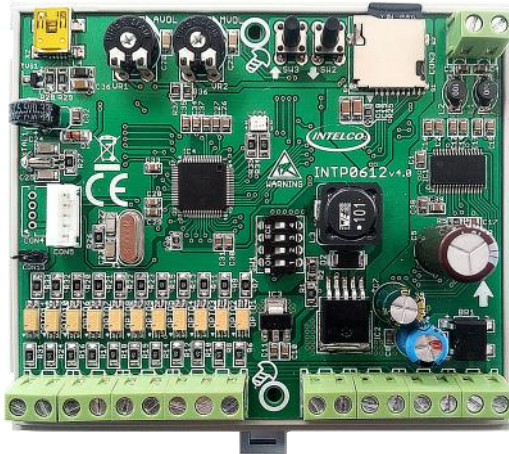




User Manual (INTD0612)

Voice announcement
for Lifts



- Page 2 Firmware
- Page 3 Overview - Features
- Page 4 Specifications
- Page 5 Wiring
- Page 6 Function description
- Page 7 Dip Switch
- Page 8 Technical Support

Please read all the instruction carefully in order to exploit all the advantages of this device.

Voice announcement
for elevator

INTD0612



Version history

V4.0	3/11/2016	Enable ECO mode
V5.0	1/01/2019	Add Radio and Aux functionality



General Description:

INTD0612 is an advance Voice announcement for Lifts. It can support 3 audio sources such as Micro SD, FM Radio and Auxiliary and can fit in every installation through its flexible wiring philosophy.

The device is responsible to announce the Floor level, the cabin Direction and the status of the cabin's Doors as well as Special user messages, according the opto-isolated digital inputs. In advance this device can play music during the non announcing periods from its 3 different audio sources (microSD, FM Radio, AUX)

The INTD0612 can support up to 32 Floors in Binary Code and Unlimited number of Floors in Serial Protocols.

A GONG signal provided from the control panel is also handled from the device in order to start announcing the floors.

Finally an ECO signal can given to the device in order to pause any playback action.

Features:

- High end 10W Audio power Amplifier
- Crystal clear CD audio quality
- MP3 Decoding (Up to 128Kbps /44.1Khz/16Bit/Stereo)
- FM Radio
- Auxiliary audio source (3.5mm jack)
- Unlimited number of Floors (Serial protocols)
- Unlimited number of music files
- Up to +/-3 Floors offset from Dip Switch
- Separate on-board volume control for Voice announcements and Music playback
- FM Radio frequency user selectable from on-board user interface
- Up to 32GB microSD
- Long File Names in mp3 files
- ECO Mode n order to Pause the music playback remotely

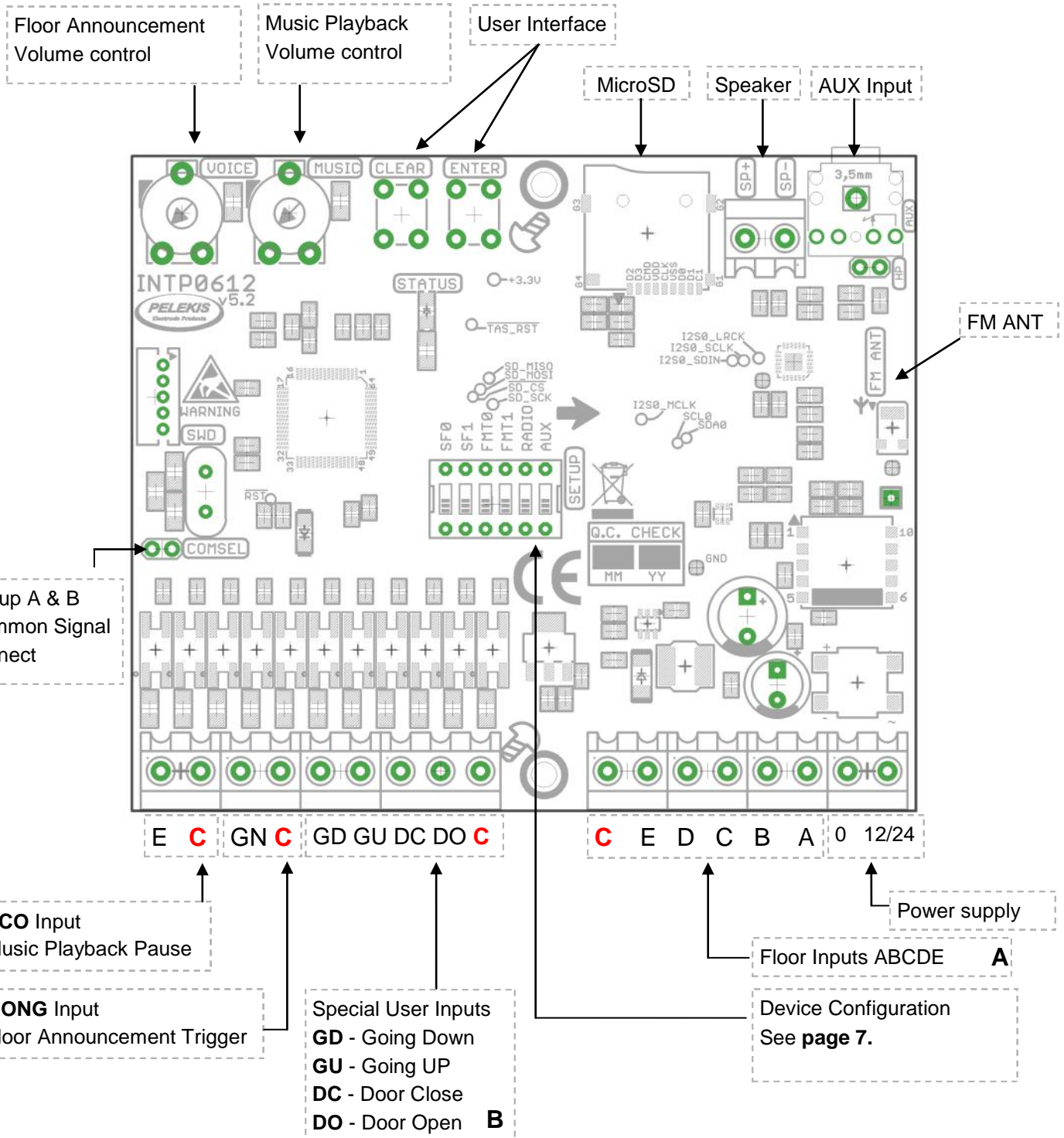


Specifications:

Power Supply	12/24V DC/AC(50Hz)
Power Consumption	3.5W continuous ,with all peripherals and all led activated
Inputs	Group A: ABCDE Group B: GD(↓), GU(↑), DO(Door Open), DC(Door Close) Extra: GN(Gong) , E(ECO)
Outputs	Loudspeaker 4 - 8 Ohm/ >10W
Storage	Type : microSD card Supported sizes : 1,2,3,16 and 32GB Format : Windows (FAT32) Supported classes: 2,4,6,10.
Audio Sources	<ul style="list-style-type: none"> • Micro SD • FM Radio • Auxiliary Source (3.5mm jack)
User Interface	<ul style="list-style-type: none"> • 2x Volume Control Trimmers • 2x User Buttons
Supported File type	MP3 (Up to 128Kbps / 44,1Khz /16bit /Stereo)
Additional features	Supported application PELEKIS Voice Manager for con-figuration mode of the device. Compatibility : Windows XP/7/8/10
Operating temperature	0-60°C
Operating humidity	10-80%
Dimensions (External)	145x190x50 mm (W x D x H)
Weight (Total/w Battery)	<1Kg

Wiring :

Connection to control panel with input type BCD and inputs of additional functions for moving arrows, door state, ECO and GONG, as shown in scheme 1.



Note! All commons are marked as "C".



Function description :

After the proper hardware connection between the INTD0612 and the Control panel has been done, and after the Device configuration has been defined from the DipSwitch, the technician can power up the device.

NOTE 1: The provided microSD should remain always attached on the device.

NOTE 2: The folders structure as well as the folders and files names should not be edited or changed for any reason.

Operation of the device

The device will announce every new Floor and every new User Special Messages according the status of its Floor and User Special Inputs while the GONG Inputs is also appears.

GONG signal operates as a trigger for any Floor and User Special message announcement.

In case where GONG signal is not provided by the control panel , the installer should make a constant short circuit in the GONG Input in order trick the device.

During the period of any Floor and User Special message announcement every playback music source audio (microSD, FM Radio, AUX) is suspended.

At the end of this announcement the system will continue the playback of the selected playback audio source.

Every playback audio source enabled only when the ECO Input is in OFF state.

This means that there will be no playback audio action if ECO signal appears on the ECO terminals.

Attention! ECO signal is Active Low signal, that means that a logic low "0" should be applied in order to let device know the ECO signal is enabled.

Dip Switch :

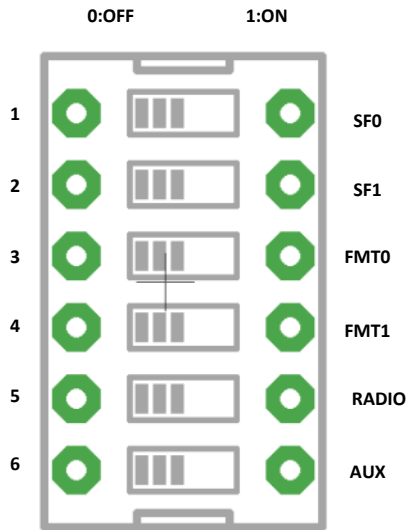


Table 1

Function: <i>Selecting starting floor</i>		
SF0	SF1	Starting Floor
0	0	Current Floor
1	0	Current Floor+1
0	1	Current Floor+2
1	1	Current Floor+3

Attention! Default Starting Floor is defined to be the “-3”

Function: <i>Select Input Protocol</i>		
FMT0	FMT1	Input Type
0	0	ONE WIRE PER FLOOR
1	0	Binary (BCD)
0	1	KONE Binary (BCD)
1	1	MAGNET *

Function: <i>Select Audio Source</i>		
RADIO	AUX	Audio Source
0	0	Micro SD
1	0	RADIO
0	1	AUX (3.5mm Jack)
1	1	None

Attention! In Magnet Function only inputs A and B are working, from Group A



Technical support

For technical support, contact the local distributor or Pelekis Electronics .

Pelekis Electronics Contact Info :

Tel. :+30 210 23 23 345

Fax :+30 210 23 86 382

E-mail : service@pelekis.tech

Website : www.pelekis.tech