



PRODUCT CATALOGUE

Elevator Department

2019 - 2020

Product Families:

- Emergency phone systems. (EN81-20, EN81-28)
- Cabin's autonomy LED lighting with Back-up (EN81-20, EN81-28)
- Shaft's autonomy LED lighting with Back-up (EN81-20)
- Access control systems (Card Reader - Password)
- Voice announcer & Floor Indicators

For more information visit our Website:
www.pelekis.eu



CONTENTS

03	Introduction
04	Elevator Department
	Emergency Phone Systems
05	Cabin's Phone RedPhone • Surface-Mounted version Cabin's Phone RedPhone
06	Emergency Phone for 3 Point Communication • GSM Gateway
07	GSM Gateway 4G • Intercommunication System
08	AutoDialer PWR • Voice Terminal behind the COP
09	Flush Mounted Voice Terminals
10	Surface Mounted Voice Terminals
	Cabin Accessories
11	Cabin LED Light Kit with Emergency Back Up
12	Access Control System with card (NFC Tech)
12	Access Control System with password (Keylock)
13	Voice Announcer with mp3 + FM Radio
	Shaft Accessories
14	Shaft LED Lighting Kit with Emergency Back Up (EN81-20)
	Floor Indicators
15	TFT-LCD with micro SD (Horizontal - Vertical placement)
16	STN-LCD Dot Type with micro SD • STN-LCD Segment Type
17	Dot Matrix 1" Displays
18	Dot Matrix 2" Displays
19	Segment Displays (0.8")
20	Segment Displays (1" - 1.2")
21	Segment Displays (1.5")
22	Segment Displays (1.8") • Arrows

Introduction



PELEKIS Electronics was founded in 1989 aiming on the development, industrial production and disposal of safety electronic products for lifts. We are steadily oriented in constructing high quality products and we are certified by TUV Austria Hellas according standard ISO 9001/2015 the last 14 years.

PELEKIS Electronics is a Family Business partnership passed from father to son with a successful transition to sibling generation leadership. The organization chart of the company defines the roles of the employees and places responsibilities with meritocracy.

Our manufacturing process is separated into three sectors Elevators, LED Lighting and H.V.AC.

Each department has specialized staff, always willing to serve the customer at every demand. We have established a well-functioning team with common values, vision, and goals. The best of us, is our objective and mission, regardless the concern of each individual and that makes us successful as a team.

The RND Department employs 4 electronic engineers specialized in microcontrollers and LEDs field. The consistent cooperation with University of West Attica in Greece and by attending the technical international meetings and exhibitions all around the world enable our people to be caught up with every latest technology and procedures. Our premises are equipped with cutting-edge equipment and machinery and company's procedures are certified by ISO9001:2015 .

With over 30 years in the business of the lifts, PELEKIS Electronics has established trustful collaborations on the domestic market and our products can be found almost in every elevator in Greece.

The last 19 years PELEKIS Electronics is known outside Greek borders, accomplishing a consistent increasingly export activity in major European countries such as England, France, Germany, Holland, Italy, Cyprus, Poland.

Commitment to our clients is a high priority to our business. We do not compromise on our values and rules.

'We do not trust words, we trust actions'.

Pelekis Vangelis

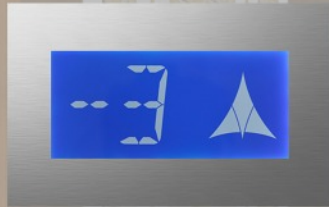


Dot-Matrix Displays



Access Control Systems

Cabin's and Shaft's
Autonomy Lighting System



STN - LCDs



TFT - LCDs



GSM Gateway

Emergency Phone Systems



Elevator Department

In the section of elevators, PELEKIS Electronics has gained a trustful brand name and prevailed on all competition the last 30 years. Cooperating with greatest Greek companies and accomplishing every project assigned , we managed to build a great reputation.

Our elevator department is designing and developing high-end electronic products , according to the latest European Standards and Directives for lifts (EN81-20 , EN81-28) and that gives a place for us at the top of the list of European suppliers.

PELEKIS Electronics applies a Quality Management System in line with ISO 9001:2015 Standard, in Design, Assembly & Trade of electronic devices since 2005.

CABIN'S EMERGENCY PHONE SYSTEMS

RedPhone (Flush-Mounted)



Product Description

RedPhone is cabin's emergency phone system with capability of "hands-free" and on-board memory for the preset of stored telephone numbers. It is equipped with metal facade for flush mounting inside the lift car which is engraved with the using instructions available in every language. The product can be combined with GSM (INTD0909) for optimal operation.

Model No.	INTD0900
Power Supply	Telephone Line
Emergency Call Numbers	Up to 4 Numbers
Inputs	<ul style="list-style-type: none"> ● 12 to 24 V DC for activation "NOT CALL" FILTER ● Emergency dry contact inputs . ● Phone Signal from GSM terminal or provider.
Outputs	<ul style="list-style-type: none"> ● Relay dry contacts (NC/NO) ● Pictograms
Extra Features	<ul style="list-style-type: none"> ● Call in progress detection (Busy/Not answer). ● Hands free micro trimming function. ● Remote control using DTMF commands. ● Extended user command set.
Dimensions	160x120x30 mm
Weight	225gr

RedPhone (Surface-mounted)



Product Description

This version of RedPhone is cabin's emergency phone with capability of "hands - free", installed call button for surface mounting . The sleek and thin design of the phone allows you to place it in every situation either the space is constrained or not. The product can be combined with GSM (INTD0909) for optimal operation.

Model No.	INTD0905
Power Supply	12 to 48VDC or Telephone Line
Audio Adjust	Balance microphone - loudspeaker
Inputs	Self powered from telephone line
Protection	Input's overvoltage
Dimensions	160x120x30 mm
Weight	225gr

EMERGENCY PHONE SYSTEMS

3 Point Communication Phones



Product Description

Emergency phone system for 3 point communication setup with capability of “hands-free” and on-board memory for the preset of stored telephone numbers. Each device can store different telephone numbers on its memory. The trapped technical personnel can communicate to escape either he is above the lift car or below to the bottom of shaft.

Model No.	INTD0902
Power Supply	12 to 48VDC or Telephone Line
Audio Adjust	Balance microphone - loudspeaker
Extra Features	<ul style="list-style-type: none"> Self powered from telephone line Telephone numbers programming by keypad
Protection	Input's overvoltage
Dimensions	103x184x24 mm
Weight	350gr

GSM Gateway



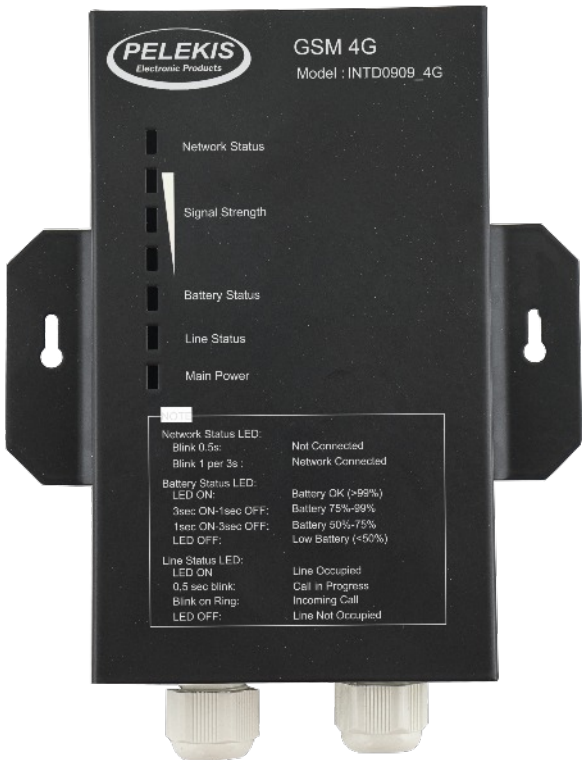
Product Description

The INTD0909 is GSM Gateway 2G that replaces the telephone line and is ideal solution in every installation that does not provide one. The device is compatible with SIM-card of Standard model, utilizing Voice, SMS and Data. The unit has integrated battery backup system ensuring continuous communication up to 8 hours. This GSM can function remotely actions thanks to the Relays (dry contacts) that are integrated to the unit via application (App Store/Play Store) offering auto-report about the condition of the battery and electricity condition (outage event).

Model No.	INTD0909
Power Supply	230VAC and 6V/1.3Ah SLA battery backup
Battery Autonomy	Up to 8 hours
Inputs	2 optical isolated inputs
Outputs	2 Dry relay contacts
Extra Features	<ul style="list-style-type: none"> Compatible with SIM card-less operation, dialling IEN(112). Real time mains and battery condition monitoring. In event of failure automatically SMS is sent up to 3 telephone numbers. Remotely device control via application through SMS texting. Combined with RedPhone (INTD0900/901) can achieve excellent call quality and exceptionally consistent operation.
Dimensions	200x136x52 mm

EMERGENCY PHONE SYSTEMS

GSM Gateway 4G



Product Description

The INTD0909_4G is GSM Gateway that replaces the telephone line and is ideal solution in every installation that does not provide one. The device is compatible with SIM-card of Micro model, utilizing Voice, SMS and Data. The unit has integrated battery backup system ensuring continuous communication up to 8 hours. This GSM can function remotely actions thanks to the Relays (dry contacts) that are integrated to the unit via application (App Store/Play Store) offering auto-report about the condition of the battery and electricity condition (outage event).

Model No.	INTD0909_4G
Power Supply	18V DC 1W(pack 230V included)
Battery Autonomy	Up to 8 hours
Inputs	2 optical isolated inputs
Outputs	2 Dry relay contacts
Extra Features	<ul style="list-style-type: none">● Compatible with SIM card-less operation, dialling IEN(112).● Real time mains and battery condition monitoring. In event of failure automatically SMS is sent up to 3 telephone numbers.● Remotely device control via application through SMS texting.● Combined with RedPhone (INTD0900/901) can achieve excellent call quality and exceptionally consistent operation.
Dimensions	200x136x52 mm

Intercommunication System



Product Description

The INTD0906 is the world slimmest Intercommunication unit that is specially designed to fit the limited space inside the Machine-room-less control panels. The unit is placed parallel with the telephone line that is wired in the Cabin's autodialer or emergency phone and is responsible to establish intercommunication between the Cabin and the machine room in any time. User is able to select between the in-ear Headphones(included) or any common voice terminal in order to communicate with the cabin's telephone terminal.

Model No.	INTD0906
Power Supply	12/24V DC @1W
Inputs	<ul style="list-style-type: none">● 1x Telephone line (TIP/RING) from provider● 1x Intercommunication enable button
Outputs	<ul style="list-style-type: none">● 1x Telephone line (TIP/RING) to cabin● 1x Telephone terminal for the control room● 1x headphones (jack 3.5 connector)
Features	<ul style="list-style-type: none">● Indication LEDs● Selection between common Terminal and Headphones● MRL and DIN Rail mount options● World Slimmest footprint
Dimensions	90x55x20 mm
Weight	250gr

EMERGENCY PHONE SYSTEMS

Autodialer PWR



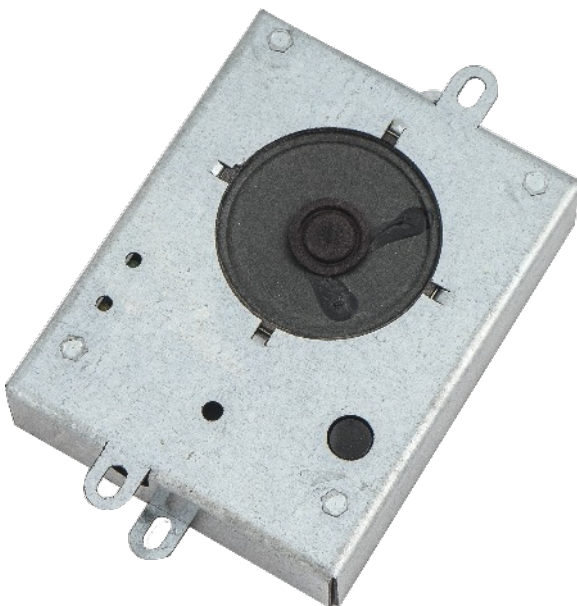
Product Description

The Autodialer PWR is an advanced emergency phone that is designed to be placed on the top of the cabin. This device is the central unit on the emergency telephone system where is designed offer 2 points communication in case of emergency through the Voice Terminals that are connected on it through plug and play UTP cables.

This unit come with several features and advantages in order to be fully compatible with the EN81-28 Standard.

Model No.	INTD0901
Power Supply	12/24V DC @1W
Inputs	<ul style="list-style-type: none"> ● 1x Telephone line (TIP/RING) ● 1x False call alarm (Filter) ● 1x Digital input ● 1x External microphone
Outputs	<ul style="list-style-type: none"> ● 1x Dry contact signal ● 1x External speaker ● 2x Voice terminal (A/B)
Features	4 emergency telephone number in each protocol 1 internal telephone code for each emergency number Voice/P100/CPC protocol supported Recorded voice messages (unlimited) DTMF enabled Good operation checkup Remote control
Dimensions	200x140x30 mm
Weight	350gr

Voice Terminal behind the COP



Product Description

The VT_COP_BP is a Voice Terminal designed to be placed on the back side of the COP. This device comes with the Speaker, Mic, 2 Pictograms and Button.

Caution! This device can combined only with the INTD0901 device.

Model No.	VT_COP_BP
Power Supply	12/24V DC @100mW
Microphone	Piezoelectric microphone
Speaker	8Ω/1W Φ50 Speaker
Buttons	Dry Contact (Normally Open)
Pictograms	<ul style="list-style-type: none"> ● Call ● Speak
Dimensions	90x155x30 mm
Weight	250g

EMERGENCY PHONE SYSTEMS

Flush Mounted Voice Terminal



Product Description

The VT_FM_BP is a flush mounted Voice Terminal designed to be placed on the COP. This device comes with the Speaker, Mic, 2 Pictograms and Button.
Caution! This device can combined only with the INTD0901 device.

Model No.	VT_FM_BP
Power Supply	12/24V DC @100mW
Microphone	Piezoelectric microphone
Speaker	8Ω/1W Φ50 Speaker
Buttons	Dry Contact (Normally Open)
Pictograms	<ul style="list-style-type: none">● Call● Speak
Dimensions	90x155x15 mm
Weight	250g

Flush Mounted Voice Terminal



Product Description

The VT_FM_P is a flush mounted Voice Terminal designed to be placed on the COP. This device comes with the Speaker, Mic, 2 Pictograms.
Caution! This device can combined only with the INTD0901 device.

Model No.	VT_FM_P
Power Supply	12/24V DC @100mW
Microphone	Piezoelectric microphone
Speaker	8Ω/1W Φ50 Speaker
Buttons	-
Pictograms	<ul style="list-style-type: none">● Call● Speak
Dimensions	90x155x15 mm
Weight	250g

EMERGENCY PHONE SYSTEMS

Surface Mounted Voice Terminal



Product Description

The VT_SM_BP is a surface mounted Voice Terminal designed to be placed on the COP. This device comes with the Speaker, Mic, 2 Pictograms and Button.

Caution! This device can combined only with the INTD0901 device.

Model No.	VT_SM_P
Power Supply	12/24V DC @100mW
Microphone	Piezoelectric microphone
Speaker	8Ω/1W Φ50 Speaker
Buttons	Dry Contact (Normally Open)
Pictograms	<ul style="list-style-type: none">● Call● Speak
Dimensions	90x155x15 mm
Weight	250g

Surface Mounted Voice Terminal



Product Description

The VT_SM_BP is a surface mounted Voice Terminal designed to be placed on the COP. This device comes with the Speaker, Mic, 2 Pictograms and Button.

Caution! This device can combined only with the INTD0901 device.

Model No.	VT_SM_P
Power Supply	12/24V DC @100mW
Microphone	Piezoelectric microphone
Speaker	8Ω/1W Φ50 Speaker
Buttons	-
Pictograms	<ul style="list-style-type: none">● Call● Speak
Dimensions	90x155x15 mm
Weight	250g

CABIN'S ACCESSORIES

Autonomy Cabin LED Lighting Kit with Back-Up



Product Description

WD0805 is our most efficient LED Light Driver, driving up to 6 F12-X LED Downlights in mains power supply condition. In event of electricity outage, thanks to integrated battery (type. SLA 12V/1.3Ah) and the smart design of its system, automatically alternates mode mains to backup driving 4 F12-X LED Downlights with autonomy capability up to 3 hours. The unit has integrated dimmer controller, adjusting the desirable brightness in the lift car, with configurable time before activating dimming function. Unit's on-board protection circuits and plastic housing (IP 65) ensure its durability and proper operation.

Model No.	WD0805
Input Voltage	230V AC (195 - 260V input range)
Modes of operation	Live condition and Battery condition
Power consumption	30W peak (Tamb:27 deg/ Battery charging starts at 25%)
Extra Features	<ul style="list-style-type: none"> ● Sophisticated and smart battery charging. ● The battery is disconnected automatically in low voltage conditions as well it never allow it being discharged. ● Delay with 10min resolution in Dimming function. ● Fully pre-wired system. Plug-and-Play installation.
Protection	Mains line overvoltage. Mains line undervoltage. Thermal shutdown (Hysteretic). Specialized SLA battery charger. DC Short circuit non latching shutdown. DC Open loop non latching shutdown.
Dimensions	(H x W x L) 22 x 22 x22 mm
Weight (Incl. Battery)	940g

F12-X LED Downlight



Product Description

F12-X has been specifically designed by our RND team for the roof of the lift car. Equipped with one of the most durable and best quality LEDs in Europe, the visual and energy saving result is a constant. Thanks to the wider light diffusion angle (120), Ultra brightness and easy-adjust extensions rings that allow every unit to be fitted into holes up to 84mm makes it the perfect replacement for existing low and mains voltage GU10 & M. F12-X combined with WD0805 provide the perfect solution for every lift car lighting installation.

Model No.	F12-X
Power Supply	12V (AC/DC)
Ultra Bright	145 Lm/Watt
Power consumption	2.7W (At VIN:12VDC/Tamb:27 deg)
Extra Features	Wider light diffusion angle: 120 Fully pre-wired. Anti-theft option with mounting lock bracket.
Protection	<ul style="list-style-type: none"> ● Power supply reverse polarity. ● Thermal current limiter.
Optical view diameter	50mm
Overall Diameter(Incl. Ring	79,5mm

CABIN'S ACCESSORIES

Access Control System with NFC Tech



Product Description

TD1010 is our most advanced access control system. Thanks to the sophisticated design and the embedded cutting-edge technology of NFC, TD1010 fulfils its target of design, connecting one user with multi-floors and one floor with multi-users. TD1010 converts the procedure of the accessibility management to the absolute reliable, safe and fast process, ready to be placed in every lift in which control of access is deemed necessary. The developed application (PlayStore) does its configuration a simple and painless process. The two different housing types make unit be durable and robust solution, easy to fitted in every lift car, either for flush or surface mounting.

Model No.	INTD1010
NFC System	
Power Supply	12VDC or 24VDC
Outputs	7 N/O Relay Dry contact, 1 N/O N/C Relay
NFC Cards	
Administrator Card	4 Kb
User Card	525 Bytes
Maximum User cards per device	124
Extra Features	Device programming via application. User management via application. Available tags - Cards , Adhesive Tags, Brelock

Access Control System with Metal Keypad



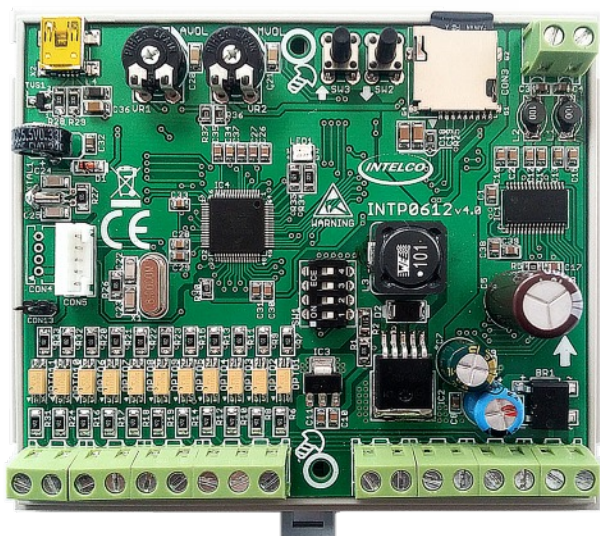
Product Description

TD1001's philosophy is the common one in access control field with password, adding extra safety to each elevator. The sophisticated design of the device allows the storing of multiple user passwords in its on-board memory and one master administrator password. The sleek metal housing and metal keypad, an accessory for the lift car, deliver its promise for resilient and robust structure, easy to fitted in every installation either for flush or surface mounting.

Model No.	INTD1001
Power Supply	12 to 24 V (AC/DC)
User password storage	Up to 8 different passwords
Administrator password storage	1
Output relays functions	Latch Mode ON/OFF Supported. Pulse output with programmable ON time.
Extra Features	<ul style="list-style-type: none"> ● Reset user password per floor. ● Programmable ON time per floor.
Protection	Anti-theft structure.
PCB mounting hole diameter	5mm
PCB Dimensions	71,5x80,5x13 mm
Weight	540gr

CABIN'S ACCESSORIES

Voice Announcer with microSD card and FM Radio



Product Description

TD0612, is voice announcer equipped with micro SD-card able to play and pronounce floors and lift music stored to up to 32GB SD-Card. Thanks to highly developed software interface for Windows and the compatibility with .MP3 files, it makes it easier to the user to change or add music. The high-quality loudspeaker that comes with every unit, provide to the lift car crystal clear, powerful sound for every lift car size. Equipped with FM Module, furthermore the user is allowed to choose his desirable "FM band". Each unit's base provides clips for easily mounting on a DIN-Rail.

Model No.	INTD0612
Power Supply	12/24V DC/AC(50Hz)
Power Consumption	3.5W constant, both peripherals and LEDs activated.
Inputs	Group A: ABCDE Group B: GD(▼), GU(▲), DO(Door Open), DC(Door Close) Extra: GN(Gong) , E(ECO)
Outputs	Loudspeaker 4-8 Ohm/ >10W
Storage	Type: microSD card Memory Storage Capacity: Up to 32GB Format: Windows(FAT32) Supported classes: 2,4,6,10
Supported file types	MP3 (Up to 128Kbps /44,1Khz/Stereo)
Extra Features	Device Configuration via PELEKIS Voice Manager Application.
Dimensions	145x190x50mm (WxDxH)
Weight	<1Kg

SHAFT’S ACCESSORIES

Autonomy Shaft LED Lighting Kit with Back-Up



Product Description
SLS401 is an innovative product in the field of Shaft Lighting, replacing all the conventional types of lamps and lights. The controller and LED Light Saber provide a great simple “plug and play” installation and include built in emergency back-up in every fitting. Fully compliant with EN81-20, in normal operation LED Light Saber exceeds 150 Lux and in emergency mode reliably exceeds 15 Lux throughout the shaft. The system includes two way relay switching between the machine room and pit with optional three way switching to be placed where is needed. Fittings’ housing (IP 65) and overall system’s RCD protection make this the absolute product for every shaft lighting demand.

Model No.	SLS401
Power Supply	230V AC 50Hz
Power Consumption	10W peak (Bulk charging), 3W(Standby)
LED Light Saber power consumption	Live Mode - 20W Battery Mode - 3W
Battery Type	Sealed Lead Acid GEL type 12V/7.0Ah
Battery charger type	2 Step bulk charge
Socket AC Load	1KW
LED Saber Length / Height	Length 120cm (4 ft) / Height 30mm
Operation temperature	0-80°C
SLS401 consists of:	<ul style="list-style-type: none">● CEM (Controller)● MRS (Machine Room Switching)● PLS (Pit Light Switch with Socket)● CLS (Car Light Switching - Optional)● T4E (LED Light Saber)● EXL-1 (Extension Lead 1m)● EXL-5 (Extension Lead 5m)● EXL-10 (Extension Lead 10m)

FLOOR INDICATORS

TFT - LCD Display



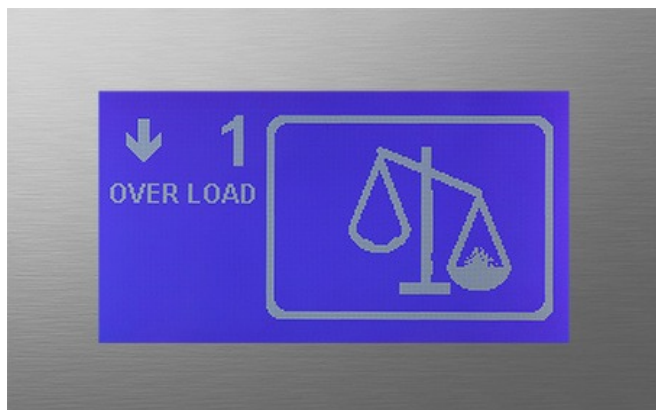
Product Description

INTD0521 is our full colour floor indicator with micro SD for storing the desirable screened graphics. All the graphics are editable via Software compatible with Windows OS. The unit comes with, metal frame and metal housing both for flush and surface mounting perfect solution for buildings in need of modernization.

Model No.	INTD0521
Power Supply	12V/24V DC/AC
Floor Range	Up to 32 Floors, Up to 10 Backgrounds Up to 1 Arrow Up to 1 Banner
Input Format	BCD, One wire per floor(OWPF), Magnet
Media Storage	Type: microSD card Supported Memory Storage : 1,2,4,16 and 32GB Format: Windows (FAT32) Supported classes: 2,4,6,10
Extra Features	Screen resolution: 800x480 Depth colour : 16bit RGB On-board temperature sensor. Supported Files: Bitmap RGB/565 intent to Floors Numbers / Arrows / Special indicators. Define Horizontal and Vertical property <u>Available free of charge software "PELEKIS PC Suite"</u> <u>For edit/save the graphics of the screen,</u> <u>add/change background and banners.</u> <u>OS compatibility: Windows XP/7/8/10 (32bit)</u>
Extra Inputs	ECO (Emergency Light) - White background On-board switch for display orientation 0 or 90 deg.
Protection	Optically isolated inputs
Dimensions	135x85x33 mm
View area	109x65 mm

FLOOR INDICATORS

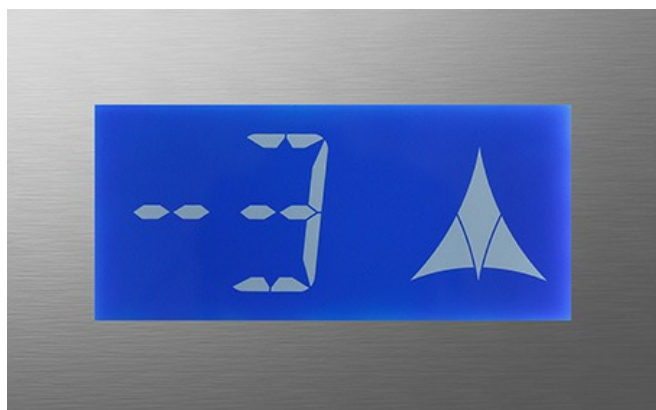
STN-LCD Display



Product Description

EMHD0501 is STN-LCD dot matrix Display B/W floor indicator with editable monochrome graphics and on-board micro SD card. The unit comes with, metal frame and metal housing both for flush and surface mounting , perfect solution for buildings in need of modernization.

Model No.	EMHD0501
Power Supply	12V to 24 V (AC/DC)
Floor Range	Up to 99
Input Formats	All known, User specific
Available Dot colours	Clear white with blue background
Protection	Optically isolated inputs
PCB Dimensions	143x104x46 mm
PCB mounting holes' diameter	3,5 mm
View area	115x64 mm



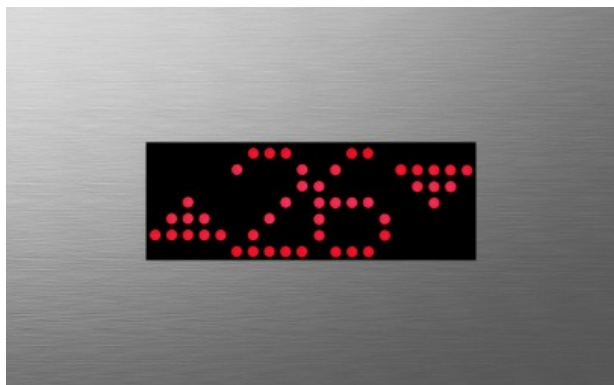
Product Description

INTD0511 is STN-LCD segment Display B/W floor indicator with standard "segment style" monochrome graphics. The unit comes with, metal frame and metal housing both for flush and surface mounting , perfect solution for buildings in need of modernization.

Model No.	INTD0511
Power Supply	12 to 24 V (AC/DC)
Floor Range	Up to 99
Inputs Format	All known, User specific
Available Segment's colour	Clear white with blue background
Protection	Optically isolated inputs
PCB Dimensions	142x75,5x20 mm
PCB mounting holes' diameter	4 mm
View area	127x57 mm

FLOOR INDICATORS

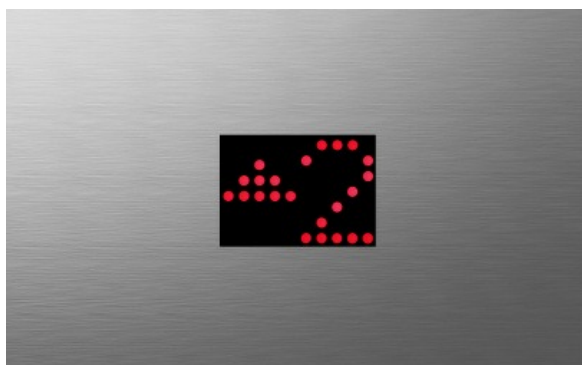
1" Dot Matrix Display



Product Description

INTD0444 is 1.0" 4 digit Dot matrix floor indicator with double arrow direction indication and adjustable starting floor. Scrolling messages and arrow up/down support. The unit comes with, metal frame and metal housing both for flush and surface mounting , perfect solution for buildings in need of modernization.

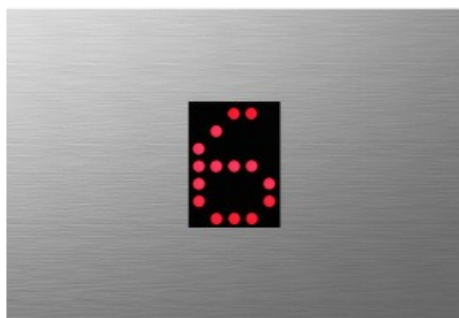
Model No.	INTD0444
Power Supply	12V to 24 V (AC/DC)
Floor Range	Up to 99
Inputs Format	All known, User specific
Available Dot colours	Red , Blue
Protection	Optically isolated inputs
PCB Dimensions	120x63x26 mm
PCB mounting holes's diameter	92x32 mm



Product Description

EMHD0461 is 1.0" 2 digit Dot matrix floor indicator with adjustable starting floor. Scrolling messages and arrow up/down support. The unit comes with, metal frame and metal housing both for flush and surface mounting , perfect solution for buildings in need of modernization.

Model No.	EMHD0461
Power Supply	12V to 24 V (AC/DC)
Floor Range	Up to 99
Inputs Format	All known, User specific
Available Dot colours	Red , Blue
Protection	Optically isolated inputs
PCB Dimensions	75x67x20 mm
PCB mounting holes' diameter	52x32 mm



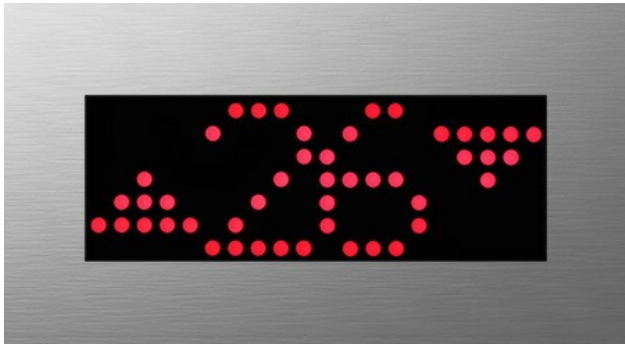
Product Description

EMHD0431 is 1.0" 1 digit Dot matrix floor indicator with adjustable starting floor. The unit comes with, metal frame and metal housing both for flush and surface mounting , perfect solution for buildings in need of modernization.

Model No.	EMHD0431
Power Supply	12V to 24 V (AC/DC)
Floor Range	Up to 99
Inputs Format	All known, User specific
Available Dot colours	Red , Blue
Protection	Optically isolated inputs
PCB Dimensions	50x70x20 mm
PCB mounting holes' diameter	32x32 mm

FLOOR INDICATORS

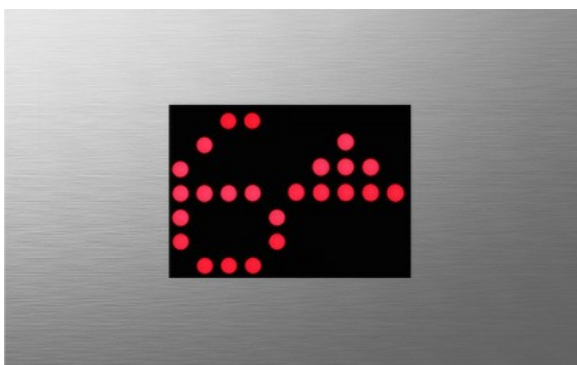
2" Dot Matrix Display



Product Description

INTD0461 is 2.0" 4 digit Dot matrix floor indicator with double arrow direction indication and adjustable starting floor. Scrolling messages and arrow up/down support. The unit comes with, metal frame and metal housing both for flush and surface mounting, perfect solution for buildings in need of modernization.

Model No.	INTD0461
Power Supply	12V to 24 V (AC/DC)
Floor Range	Up to 99
Inputs Format	All known, User specific
Available Dot colours	Red , Blue
Protection	Optically isolated inputs
PCB Dimensions	155x68x28 mm
PCB mounting holes' diameter	4 mm
View area	152x53 mm



Product Description

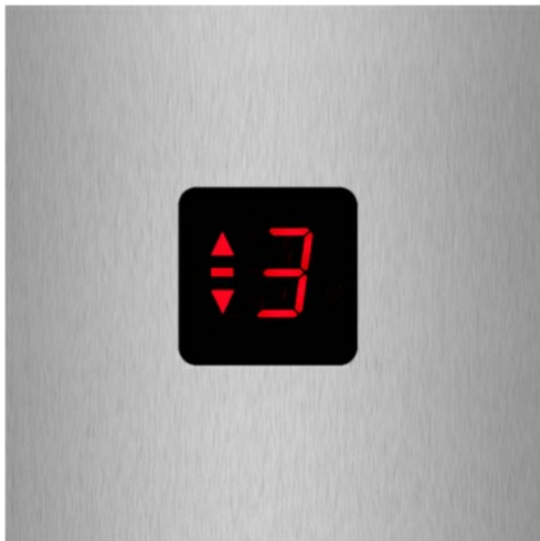
INTD0451 is 2.0" 2 digit Dot matrix floor indicator with double arrow direction indication and adjustable starting floor. Arrow up/down support. The unit comes with, metal frame and metal housing both for flush and surface mounting, perfect solution for buildings in need of modernization.

Model No.	INTD0451
Power Supply	12V to 24 V (AC/DC)
Floor Range	-3 to 9 (Totally 14 floors)
Inputs Format	All known, User specific
Available Dot colours	Red , Blue
Protection	Optically isolated inputs
PCB Dimensions	77x84x22 mm
PCB mounting holes' diameter	4 mm
View area	76x53 mm

“Over 150 models with variety of their design for different Display's Dimensions and custom metal frames for mounting.”

FLOOR INDICATORS

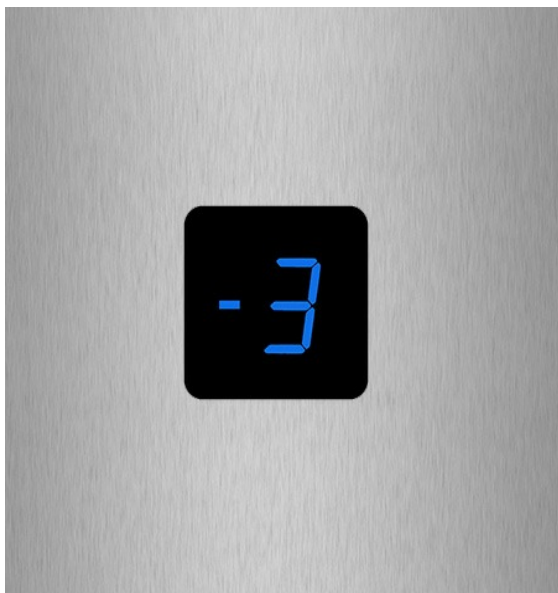
0,8" 7 Segment Display



Product Description

EMHD0342 is 0.8" Seven segment floor indicator with arrow direction indication and adjustable starting floor. The unit comes with, metal frame and metal housing both for flush and surface mounting , perfect solution for buildings in need of modernization.

Model No.	EMHD0342
Power Supply	12V to 24 V (AC/DC)
Floor Range	Up to 18 (-9 to 9)
Inputs Format	All known, User specific
Available Dot colours	Red , Blue
Protection	Optically isolated inputs
PCB Dimensions	60x50x20 mm
PCB mounting holes' diameter	3.5 mm
View area	32x28 mm



Product Description

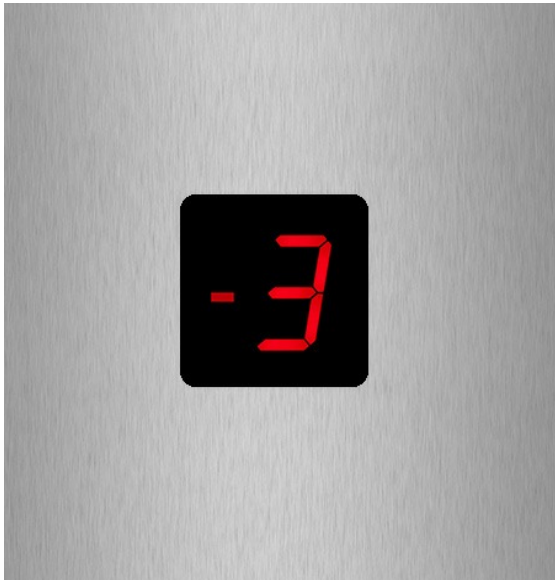
EMHD0332 is 0.8" Seven segment floor indicator and adjustable starting floor. The unit comes with, metal frame and metal housing both for flush and surface mounting , perfect solution for buildings in need of modernization.

Model No.	EMHD0332
Power Supply	12V to 24 V (AC/DC)
Floor Range	Up to 18 (-9 to 9)
Inputs Format	All known, User specific
Available Dot colours	Red , Blue
Protection	Optically isolated inputs
PCB Dimensions	60x50x20 mm
PCB mounting holes' diameter	3,5 mm
View area	28x28 mm

“We take on custom designs for low-volume production.”

FLOOR INDICATORS

1" 7 Segment Display

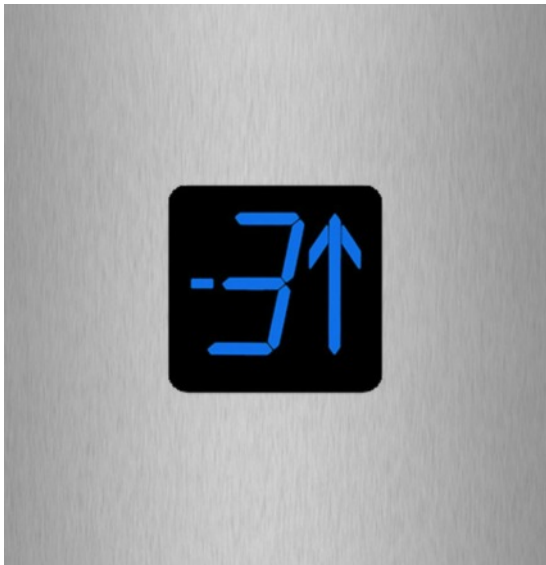


Product Description

EMHD0304 is 1.0" Seven segment floor indicator with adjustable starting floor. The unit comes with, metal frame and metal housing both for flush and surface mounting , perfect solution for buildings in need of modernization.

Model No.	EMHD0304
Power Supply	12V to 24 V (AC/DC)
Floor Range	Up to 18 (-9 to 9)
Inputs Format	All known, User specific
Available Dot colours	Red , Blue
Protection	Optically isolated inputs
PCB Dimensions	44x53x28 mm
PCB mounting holes' diameter	2.5 mm
View area	42x44 mm

1.2" 7 Segment Display



Production Description

INTD6371 is 1.2" Seven segment floor indicator with arrow direction indication and adjustable starting floor. The unit comes with, metal frame and metal housing both for flush and surface mounting , perfect solution for buildings in need of modernization.

Model No.	INTD6371
Power Supply	12V to 24 V (AC/DC)
Floor Range	Up to 9
Inputs Format	All known, User specific
Available Dot colours	Red , Blue
Protection	Optically isolated inputs
PCB Dimensions	62x90x14 mm
PCB mounting holes' diameter	4 mm
View area	48x42 mm

FLOOR INDICATORS

1,5” 7 Segment Display



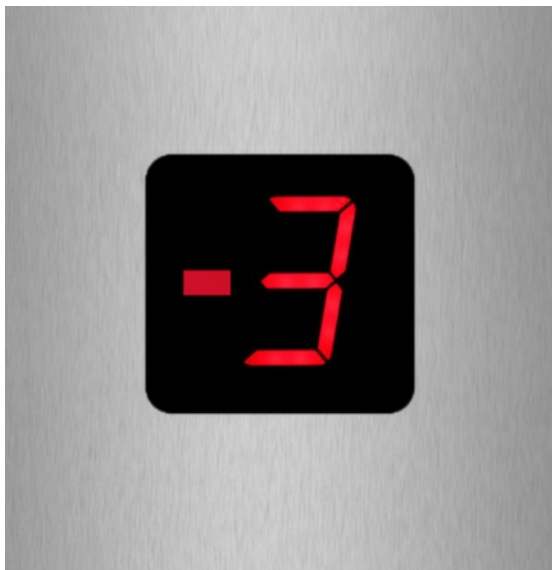
Product Description	
ITAD6302 is 1.5” Seven segment floor indicator with adjustable starting floor. The unit comes with, metal frame and metal housing both for flush and surface mounting , perfect solution for buildings in need of modernization.	
Model No.	ITAD6302
Power Supply	12 to 24 V (AC/DC)
Floor Range	Up to 18 (-9 to 9)
Inputs Format	All known, User specific
Available Segment colours	Red, Blue
Protection	Optically isolated inputs
PCB Dimensions	44x53x28 mm
PCB mounting holes’ diameter	2.5 mm
View area	42x44 mm



Product Description	
INTD6301 is 1.5” Seven segment floor indicator with arrow direction indication and adjustable starting floor. The unit comes with, metal frame and metal housing both for flush and surface mounting , perfect solution for buildings in need of modernization.	
Model No.	INTD6301
Power Supply	12 to 24 V (AC/DC)
Floor Range	Up to 9
Inputs Format	All known, User specific
Available Segment colours	Red, Blue
Protection	Optically isolated inputs
PCB Dimensions	62x90x14 mm
PCB mounting holes’ diameter	4 mm
View area	48x42 mm

FLOOR INDICATORS

1,8" 7 Segment Display

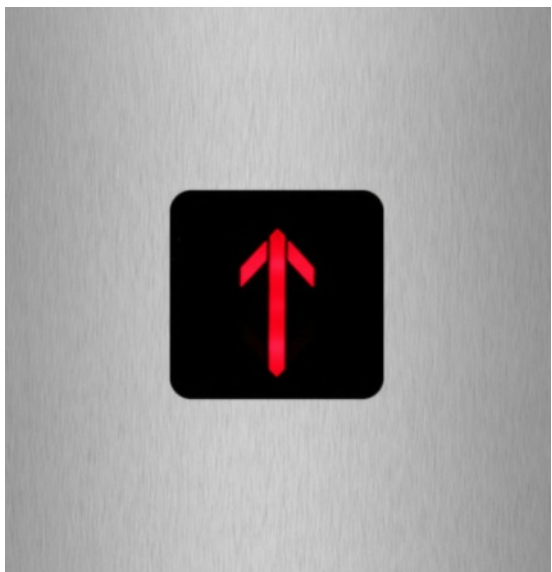


Product Description

EMHD0351 is 1.8" Seven segment floor indicator with adjustable starting floor. The unit comes with, metal frame and metal housing both for flush and surface mounting , perfect solution for buildings in need of modernization.

Model No.	EMHD0351
Power Supply	12 to 24 V (AC/DC)
Floor Range	Up to 18 (-9 to 9)
Inputs Format	All known, User specific
Available Segment colours	Red, Blue
Protection	Optically isolated inputs
PCB Dimensions	84x78x25 mm
PCB mounting holes' diameter	3 mm
View area	80x52 mm

Arrow Display



Product Description

ITAD6102 is arrow segment direction indicator. The unit comes with, metal frame and metal housing both for flush and surface mounting , perfect solution for buildings in need of modernization.

Model No.	ITAD6102
Power Supply	12 to 24 V (AC/DC)
Available Segment colour	Red, Blue
View area	From 0.8" to 1.8"

Notes

This image shows a full page of white paper with horizontal blue or grey ruling lines. The lines are evenly spaced and run across the width of the page, typical of notebook paper. There are no margins, text, or other markings on the page.



Athens | Greece

Design & Manufacture
safety products for elevators
since 1989.

CONTACT INFO

Hr. Karvouni 27 z.c. 136 71
Acharnai, Athens, Greece
Tel: 0030 210 2323345
Fax: 0030 210 2386382
Email: info@pelekis.eu
Website: www.pelekis.eu

