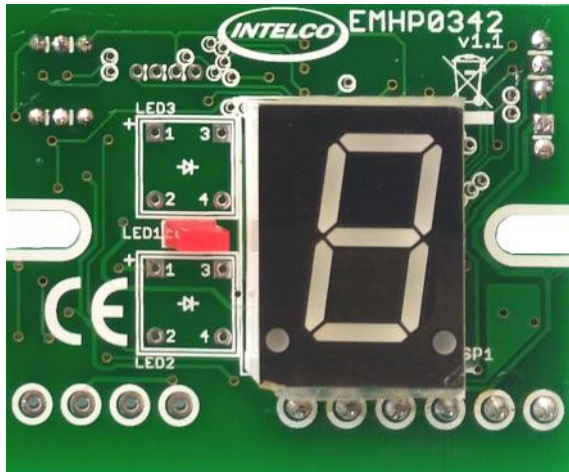




User Manual (EMHP0342)



- Page. 2 Assembly
- Page. 3 Dip Switch
- Page. 4 Technical support

Please read all the instruction carefully in order to exploit all the advantages of this device.

EMHP0342

www.pelekis.tech

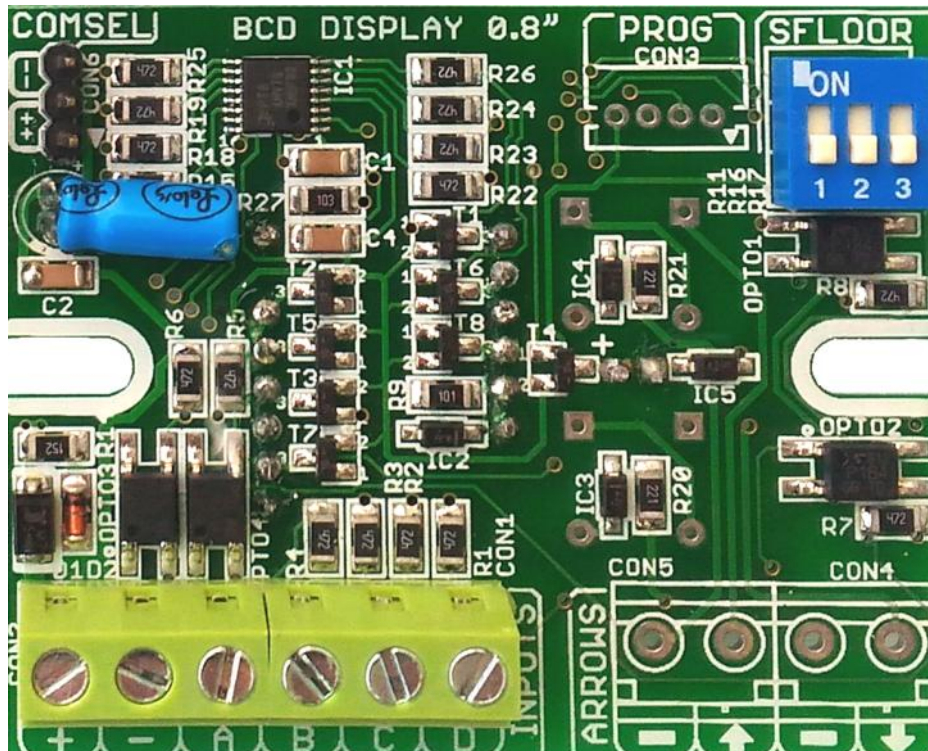
V 1.1 April 2017

Put jumper to select common



Dip Switch
Select the Starting Floor

(-) common
(+) common



Input Voltage(12-24V)

A-B-C-D (Inputs)

EMHP0342

Power Supply	12- 24 Vdc or Vac
Current	
Inputs	A, B, C, D
Max Floor	9
Min Floor	-3

Dip Switch :

The selection of Dip switches it must be before the power on of the product



A/A	Dip Switch			BCD
	1	2	3	
1	OFF	OFF	OFF	-3,-2,-1,0,H,1,2,3,4,5,6,7,8,9
2	OFF	ON	OFF	-3,-2,-1,,1,2,3,4,5,6,7,8,9
3	OFF	OFF	ON	-2,-1,0,H,1,2,3,4,5,6,7,8,9
4	OFF	ON	ON	-2,-1,0,1,2,3,4,5,6,7,8,9
5	ON	OFF	OFF	-1,0,H,1,2,3,4,5,6,7,8,9
6	ON	ON	OFF	-1,0,1,2,3,4,5,6,7,8,9
7	ON	OFF	ON	0,H,1,2,3,4,5,6,7,8,9
8	ON	ON	ON	0,1,2,3,4,5,6,7,8,9



Technical support

For technical support , contact the local distributor or Intelco Electronics .

Intelco Electronics Contact Info :

Tel. :+30 210 23 23 345

Fax :+30 210 23 86 382

E-mail : service@intelco.com.gr

Website : www.intelco.gr