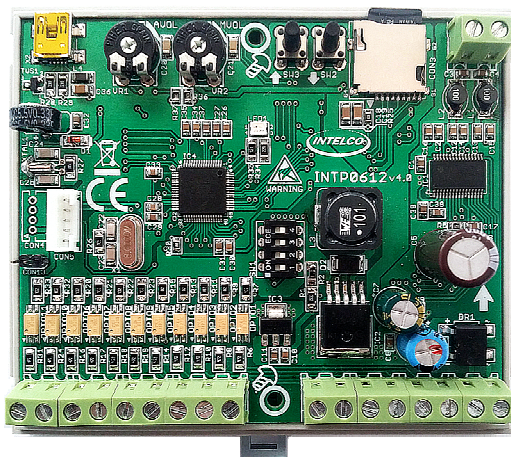




User Manual (INTD0612)

Voice announcement for elevator



- Page 2 Firmware
- Page 3 Overview—Specifications
- Page 4 Assembly
- Page 5 Mode description
- Page 6 Dip Switch
- Page 7 Technical Support

Please read all the instruction carefully in order to exploit all the advantages of this device.

INTD0612



Version history

V4.0 3/11/2012 Enable ECO mode



General Description:

Intelco Voice Announcement (INTD0612) is an electronic device announcing floors for lifts using MP3 encoded files. The device can play music files when not announcing floors or additional messages.

The device has 5 inputs (ABCDE) for announcing floors and 4 inputs (Specials) for announcing additional messages such as opening and closing of the doors and the direction of the lift.

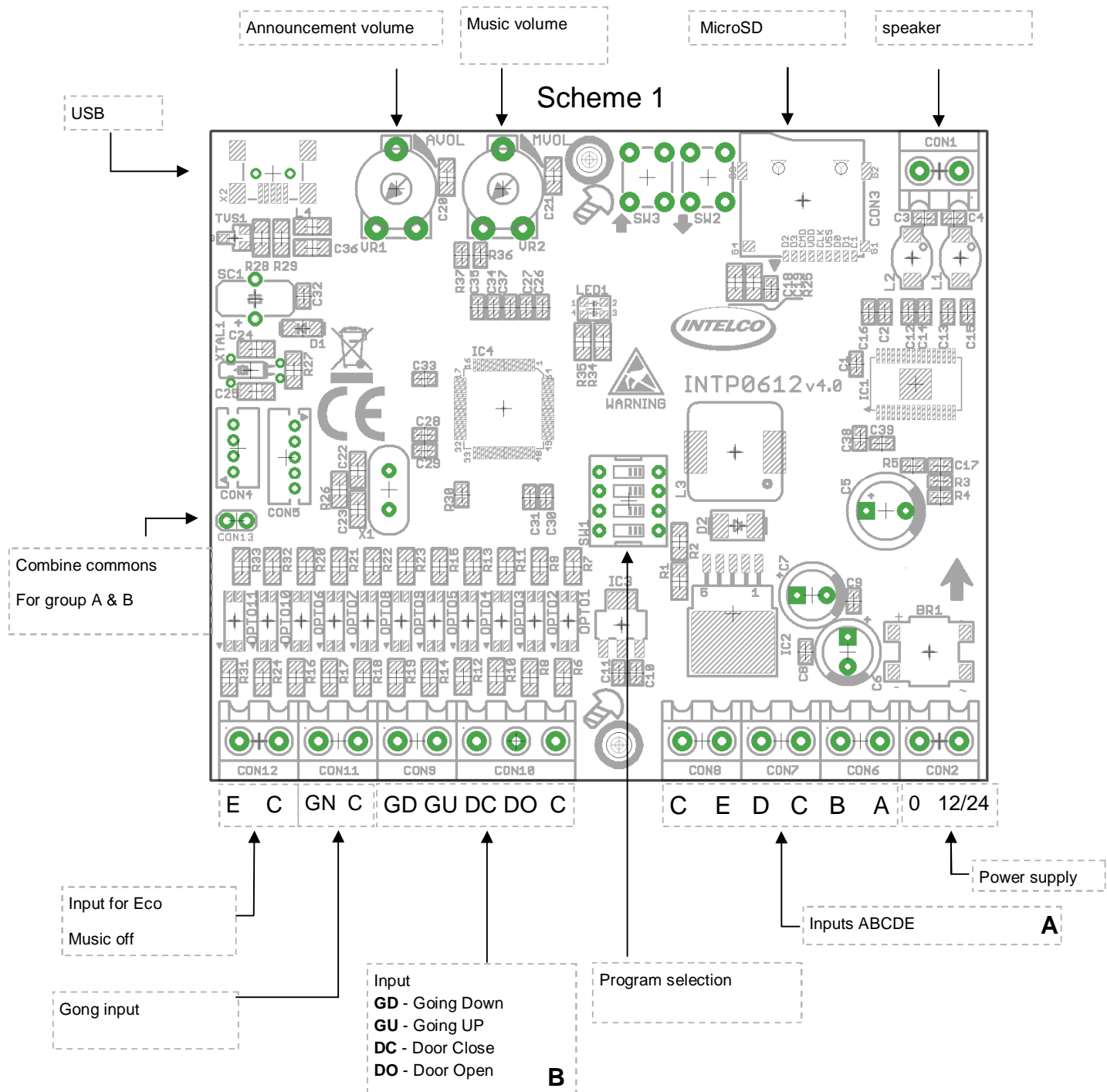
A GONG signal is also provided from the control panel to start announcing the floor and the ECO mode by which the installer can disable playing music files when not needed.

Specifications:

| | |
|---------------------------------|--|
| Power Supply | 12/24V DC/AC(50Hz) |
| Power Consumption | 3.5W continuous ,with all peripherals and all led activated |
| Inputs | Group A: ABCDE Group B: GD(↓), GU(↑), DO(Door Open), DC(Door Close) Extra: GN(Gong) , E(ECO) |
| Outputs | Loudspeaker 4 - 8 Ohm/ >10W |
| Storage | Type : microSD card Supported sizes : 1,2,3,16 and 32GB Format : Windows (FAT32) Supported classes: 2,4,6,10. |
| Supported File type | MP3 (Up to 128Kbps / 44,1Khz /16bit /Stereo) |
| Additional features | Supported application INTELCO Voice Manager for configuration mode of the device. Compatibility : Windows XP/7/8/10 |
| Operating temperature | 0-60°C |
| Operating humidity | 10-80% |
| Dimensions (External) | 145x190x50 mm (W x D x H) |
| Weight (Total/w Battery) | <1Kg |

Wiring :

Connection to control panel with input type BCD and inputs of additional functions for moving arrows, door state, ECO and GONG, as shown in scheme 1.



All commons are marked as C



Function description :

By making the desired connections of the device with the control panel and after configuring the operation through Dip Switch (see Table 1) placed on the pcb, the device is ready for function.

We place the microSD, with files produced from Intelco Voice Manager, in special slot placed on the device and make sure for correct placement.

Attention! The type of files / folders recognized from the device are very specific. For that reason we should not at all influence the structure of the files exported from Intelco Voice Manager.

Function :

The device plays every music file placed on folder "Music" for as long as input ECO is closed. When in group A(ABCDE) a signal of floor announcement appears , the device pauses the reproduced music file and announces the upcoming floor with the condition that input GONG is enabled.

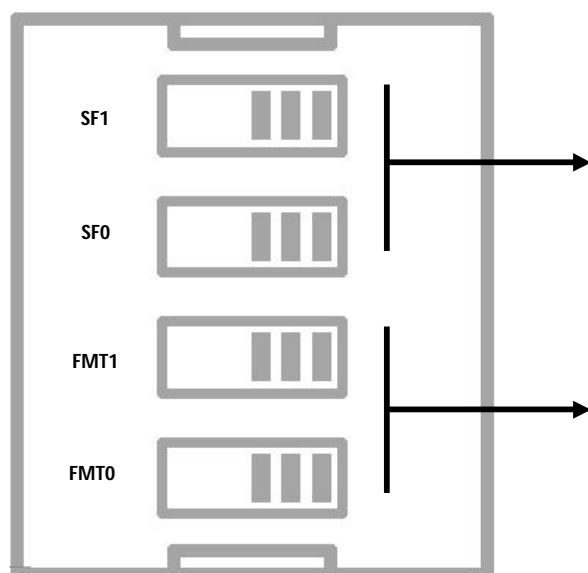
Moreover, the device is programmed to manage Special messages (input Group B) in order to announce direction of the elevator and the status of the doors.

Attention! As the device makes a logic control of the elevator direction process and door status, attention is required for the connection of the specific signals to the control panel.

During startup, the system recognizes the status of Dip Switch and depending on the corresponding operating mode defined by microSD and exportable "Config" file from Intelco Voice Manager the operation is determined.

Observation! Dip Switch take priority only when the files of microSD have factory settings and are not exported from Intelco Voice Manager.

Dip Switch :



| Function: <i>Selecting starting floor</i> | | |
|---|-----|-----------------|
| SF1 | SF0 | Starting Floor |
| 0 | 0 | Current Floor |
| 0 | 1 | Current Floor+1 |
| 1 | 0 | Current Floor+2 |
| 1 | 1 | Current Floor+3 |

| Function: <i>Select Input type</i> | | |
|------------------------------------|------|--------------------|
| FMT1 | FMT0 | Τύπος εισόδου |
| 0 | 0 | ONE WIRE PER FLOOR |
| 0 | 1 | Binary (BCD) |
| 1 | 0 | KONE Binary (BCD) |
| 1 | 1 | MAGNET * |

Attention! In Magnet Function only inputs A and B are working, from Group A



Technical support

For technical support of GSM Gateway, contact the local distributor or Intelco Electronics .

Intelco Electronics Contact Info :

Tel. :+30 210 23 23 345

Fax :+30 210 23 86 382

E-mail : service@intelco.com.gr

Website : www.intelco.gr